



EARTHLINKED
TECHNOLOGIES

PRODUCT GUIDE

EARTHLINKED TECHNOLOGIES

GEOTHERMAL RENEWABLE
ENERGY SYSTEMS



SIMPLE. EFFICIENT. EFFECTIVE.



EarthLinked Geothermal Renewable Energy Systems are **revolutionizing heating and cooling systems for your home**. As a more efficient and environmentally friendly option than traditional furnaces and air conditioners, EarthLinked provides **100% of your home's heating and cooling needs, with savings of up to 80% and consistent comfort** that is unparalleled in the industry.

About EarthLinked Technologies, Inc.

EarthLinked Technologies, Inc. is a research and technology company committed to simple, efficient and effective ways to make life easier for people and the planet. We are committed to developing innovative and state-of-the-art technology. In doing so, we have created better products with superior operations that will save you money, and ultimately provide you with a more

comfortable home. EarthLinked Geothermal Renewable Energy Systems are operating in a variety of applications and climates, saving energy and the environment on a global scale. Functional on any property, regardless of its size or age, EarthLinked Geothermal Renewable Energy Systems continue to be the leading industry solution for environmentally conscious homeowners.



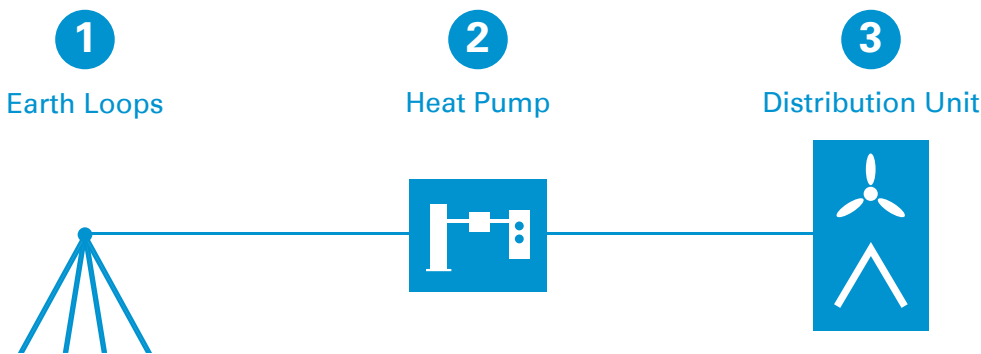


How It Works

EarthLinked Geothermal Renewable Energy Systems work seamlessly with the stored solar energy in the earth. By using small, highly conductive copper **1** earth loops and environmentally friendly refrigerant, only a small yard space is needed to begin the heating and cooling process. In the winter, the EarthLinked **2** heat pump intensifies the warm thermal energy from the earth and converts it into heat for your home.

In the summer months, the process is reversed and the unwanted heat from your home is stored back in the earth. Our patented technology controls this process more simply and efficiently than any other heating and cooling system available. Conditioned air or water is sent to the **3** distribution unit which delivers comfort to your home's radiant floor or forced air ductwork.

Simple. Efficient. Effective.



CLASSIC SERIES HEAT PUMP


- Designed to provide 100% heating, cooling and dehumidification
- The most powerful geothermal heating and cooling system on the market

The Classic Series heat pumps build on a legacy of **high performance geothermal technology** that EarthLinked Technologies invented over three decades ago. Our time-proven standard of excellence is designed to provide the **highest level of heating and cooling power** of any geothermal system currently on the market. This ensures the year-round comfort you expect and the economic and environmental benefits that only EarthLinked Technologies can deliver.

Benefits

100% Heating & Cooling	FREE Hot Water	30% Tax Credit
----------------------------------	--------------------------	--------------------------

Efficiency: Up to 3.6 COP & 17.1 EER*

 Model #	Heating		Cooling	
	Capacity BTUH	COP (Coefficient of Performance)	Capacity BTUH	EER (Energy Efficiency Ratio)
-024	24,064	3.6	30,174	17.1
-030	30,012	3.6	37,130	17.1
-036	36,002	3.6	47,282	17.1
-042	42,112	3.6	53,016	17.1
-048	48,880	3.6	64,202	17.1
-060	57,810	3.6	67,022	17.1



*Standards: 870/871 • ISO 13256-1 • ISO 13256-2



SC

- For use with high-efficiency air handler
- Onboard diagnostics available
- Indoor/outdoor powder coated steel cabinet
- Warranty: 5-year parts/ 5-year labor allowance

SD

- Same features as the SC
- Internal hot water assist – free hot water

SDH

- Same features as the SC & SD
- Control system allows for:
 - ▶ Forced air heating
 - ▶ Forced air cooling
 - ▶ Radiant floor heating

PRIME SERIES HEAT PUMP


- Perfect balance of power and efficiency
- Two stage system - lowest cost of operation
- Optimal comfort all year round

We took the best geothermal solution and made it better. The Prime Series' two-stage heat pump technology makes it **our most efficient geothermal system in operation to date**. It is the perfect balance of power, efficiency, style and intelligence. Housed within an ultra-quiet, modern cabinet, the Prime Series possesses an intelligent communicating protection system and includes a 10-year parts and 5-year labor allowance. The Prime Series **revolutionizes the geothermal energy industry**.

Benefits

100% Heating & Cooling	FREE Hot Water	30% Tax Credit
----------------------------------	--------------------------	--------------------------

Efficiency: Up to 4.8 COP & 28 EER*

 Model #		Heating		Cooling	
		Capacity BTUH	COP (Coefficient of Performance)	Capacity BTUH	EER (Energy Efficiency Ratio)
-025	Full Load	24,000	4.2	24,000	21
	Part Load	18,000	4.8	18,000	28
-030	Full Load	30,000	4.2	30,000	21
	Part Load	23,000	4.8	23,000	27
-036	Full Load	36,000	4.2	36,000	21
	Part Load	28,000	4.7	28,000	27
-040	Full Load	40,000	4.1	40,000	20
	Part Load	31,000	4.7	31,000	27
-050	Full Load	50,000	4.2	50,000	21
	Part Load	40,000	4.5	40,000	25
-060	Full Load	60,000	3.7	60,000	17.5
	Part Load	49,000	4.1	49,000	20.5



*Standards: 870/871 • ISO 13256-1 • ISO 13256-2



PSC

- Two-stage heat pump technology for maximum efficiency
- Intelligent communicating diagnostics
- Modern cabinet design with ultra-quiet operation
- Warranty: 10-year parts/ 5-year labor allowance

PSD

- Same features as the PSC
- Internal hot water assist – free hot water

PSDH

- Same features as the PSD
- Control system allows for:
 - Forced air heating
 - Forced air cooling
 - Radiant floor heating

DISTRIBUTION UNITS



Air Handler (Ducted System)

- ✓ Allows for integration into existing duct system
- ✓ High-efficiency variable speed motor
- ✓ Split-system design for maximum installation versatility
- ✓ Qualifies for Energy Star tax credit and incentives
- ✓ Color options available to match Classic or Prime Series heat pumps



Hydronic Water Module (Radiant Heating System)

- ✓ Allows for integration into new or existing hydronic radiant floor system
- ✓ High-efficiency durable circulating pump
- ✓ Brazed plate dual-wall heat exchanger with integrated protection system
- ✓ Color options available to match Classic or Prime series heat pumps

EARTH LOOPS

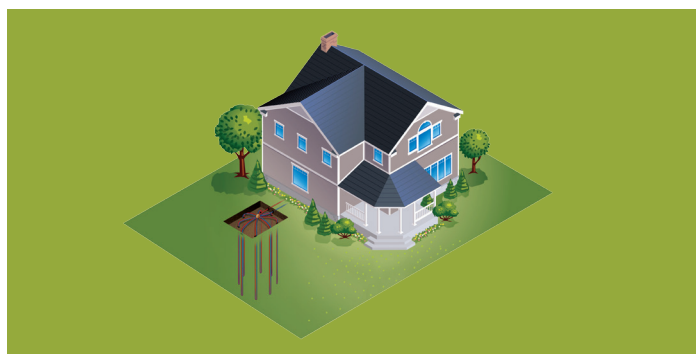
Earth Loops

The earth loops play a key role in the unsurpassed efficiency of our EarthLinked Geothermal Renewable Energy Systems. All earth loops are pre-designed, engineered and manufactured in our Lakeland, Florida facility to assure optimal performance. Because installation time is short and yard requirements are small, installation costs are kept to a minimum. A variety of design configurations are available to fit any property.



Type 1 - Vertical/Diagonal Bore

- ✓ Smallest loop system on the market
- ✓ Can be installed vertically or diagonally
- ✓ One-100' deep loop per nominal ton
- ✓ Warranty: 20-year parts/5-year labor allowance



Type 2 - Vertical/Diagonal Bore

- ✓ Most efficient vertical ground loop design in the industry
- ✓ Can be installed vertically or diagonally
- ✓ Two-75' deep loops per nominal ton
- ✓ Warranty: 20-year parts/5-year labor allowance



Type H - Horizontal Trench

- ✓ Most efficient earth loop design in the industry
- ✓ Trench, horizontal excavation, directional drilled
- ✓ One-125' long loop per nominal ton
- ✓ Warranty: 20-year parts/5-year labor allowance

EarthLinked Accessories

Hybrid Cooling Module

- ✓ Maximizes earth loop efficiency in hot climates
- ✓ Utilizes smart geothermal and traditional cooling technologies automatically

Earth Loop Protection System

- ✓ Intelligent electrochemical protection device for all EarthLinked earth loop designs
- ✓ Included as a standard feature on all Classic and Prime series heat pumps



To Our Valued Customers,

Thank you for taking the time to learn more about EarthLinked Technologies and the products we make. We believe that a great product should be simple, efficient and effective and that takes time and relentless effort. Our EarthLinked Geothermal Renewable Energy Systems are the result of more than 35 years of continuous innovation and refinement.

We're an employee-owned company focused on providing cutting-edge geothermal technology with better system performance, smaller yard requirements and a simpler installation. We extend to you an open invite to meet our team and visit our facilities. Stop by and let us share with you the industry-changing research and technology of EarthLinked Technologies.

Jeff Miller, President



EARTHLINKED
TECHNOLOGIES

EarthLinked Technologies

4151 S. Pipkin Road
Lakeland, Florida 33811 USA
earthlinked.com

phone 863-701-0096

toll-free 866-211-6102

INDUSTRY ASSOCIATIONS

